

## AC Triac Rotary Glass Panel Dimmer

Model No.: ST1

Rotary dimming/Glass panel/Leading edge or trailing edge/Wireless remote control



CE RoHS  LVD

### Features

- Rotary glass panel AC phase-cut dimmer, 1 channel output.
- To dim and switch single color dimmable LED lamps, traditional incandescent and halogen lights.
- Rotate knob to change brightness, support push and long push operation.
- 256 levels 0-100% dimming smoothly without any flash.
- Leading edge dimming or trailing edge dimming set by dip switch.
- Compatibility with RF 2.4G single zone or multiple zone dimming remote control.
- Over-heat / Over-load protection, recover automatically.

### Technical Parameters

Input and Output		Dimming data	
Input voltage	AC100-240V	Input signal	Rotary knob + RF 2.4GHz
Output voltage	AC100-240V	RF Control distance	30m
Output current	Max 1.5A	Dimming level	256 levels
Output power	150-360W	Dimming range	0-100%

Safety and EMC		Environment	
EMC standard (EMC)	EN 55015:2013 EN 61547:2009 EN 61000-3-2:2014 EN 61000-3-3:2013	Operation temperature	T <sub>a</sub> : -30°C ~ +55°C
Safety standard (LVD)	EN 61347-2-11:2002 EN 61347-1:2015 EN 62493:2015	Case temperature (Max.)	T <sub>c</sub> : +85°C
Certification	CE, EMC, LVD	IP rating	IP20

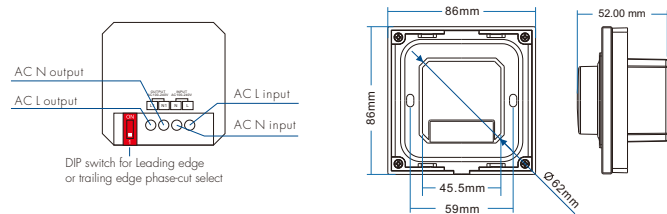
  

Warranty	
Warranty	5 years

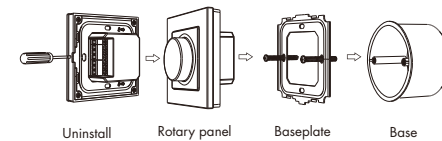
### Compatible Load Types

Load Type	Maximum Load	Remarks
Dimmable LED lamps	200W @ 220V 100W @ 110V	Due to variety of LED lamp designs, maximum number of LED lamps is further dependent on power factor result when connected to dimmer.
Triac Dimmable LED drivers	200W @ 220V 100W @ 110V	Maximum permitted number of drivers is 200W divided by driver nameplate power rating, and make sure the surge current is no more than 2 times 65A.
Incandescent lighting, HV Halogen lamps	400W @ 220V 200W @ 110V	

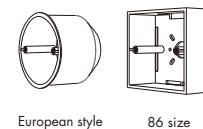
### Mechanical Structures and Installations



### Installation diagram:



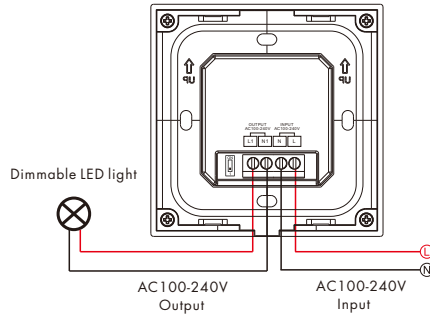
### Typical base as below:



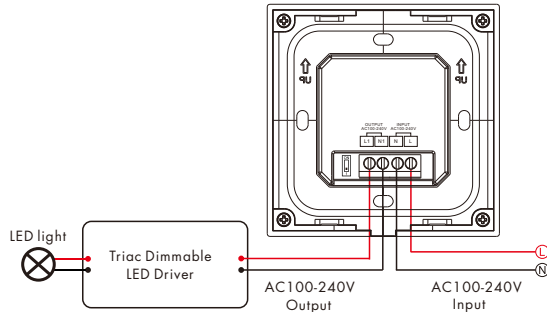
## Wiring diagram

**Caution:** Please carefully ensure all wire connections and polarities are correct and secure before applying power, otherwise this controller will be damaged.

- Connect with dimmable LED light



- Connect with Triac dimmable LED driver



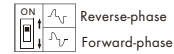
**Note:** When calculating the maximum number of load lamps or drivers, the input power or input current parameters of a single lamp or driver must be used, the output power parameters can not be used. In addition, the maximum surge current of the dimmer is 65A, the sum of surge current of multiple dimmable LED drivers should not exceed 2 times. otherwise, the product will be overloaded and damaged.

## Knob function

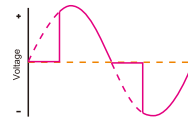
- Push: Turn on or off light.
- After turn on light:
  - Rotate: Rotate knob to adjust brightness, 2.5 turns, 50 levels.
  - Long push(1-6s): Continuous 256 levels brightness adjustment.

## Leading edge or trailing edge dimming setting

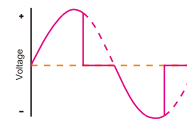
Select leading edge(forward-phase) dimmer or trailing edge(reverse-phase) dimmer according to dimmable LED light or driver.



Forward-phase control dimmer(TRIAC)



Reverse-phase control dimmer



Caution: before power on, you must confirm the selection of dip switch.

## Match Remote Control (two match ways)

The AC Triac rotary panel dimmer can also match with the RF dimming remote (optional). End user can choose the suitable match/delete ways. Two options are offered for selection:

### Use Knob

Match:

Turn on light, turn off, immediately push the knob for 5s, then press on/off key (single zone remote) or zone key (multiple zone remote) of the RF remote within 5s.

Delete:

Turn on light, turn off, immediately push the knob for 10s, delete all matched RF remote.

### Use Power Restart

Match:

Switch off the power, then switch on power again, immediately short press on/off key (single zone remote) or zone key (multiple zone remote) 3 times on the remote. The light blinks 3 times means match is successful.

Delete:

Switch off the power, then switch on power again, immediately short press on/off key (single zone remote) or zone key (multiple zone remote) 5 times on the remote. The light blinks 5 times means all matched remotes were deleted.